



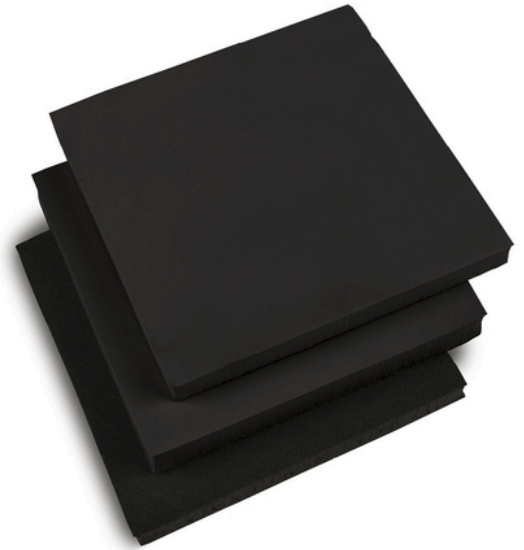
DRIVEN BY PERFORMANCE

# EnsoLite EGO

Engineered for excellent performance in automotive interior, exterior, and under hood applications.

- // Soft firmness
- // Good ozone and weather resistance
- // Broad service temperature range
- // Meets OEM specifications

[www.armacell.com](http://www.armacell.com)



 **armacell**<sup>®</sup>  
ArmaComp<sup>®</sup>

## TECHNICAL DATA - ENSOLITE EGO

Brief description	EGO is an EPDM, soft, low density, closed cell foam product produced in continuous rolls. This product meets ASTM D 1056 2A0/2A1 requirements. This product is an excellent solution for low temperature, outdoor, and/or high temperature applications. This product is UL listed for UL gasket & seals and meets various automotive specifications.
Product color range	Black
Additives	Flame retardant
ASTM D 1056 Designation	2A0/2A1
Cell structure	Closed
Form	Roll
Polymer	EPDM
Skin	S2S (Skin 2 sides)
Markets	Automotive
Applications	Gaskets and seals

Source	Specification	Comments
<b>Approvals and specifications</b>		
General Motors	GMW 17408 Class I Type III	Interior, Exterior & Under-hood Applications Exception to compression set @ 70°C (158°F) & fogging

Property	Value / Assessment				Standard / Test method
<b>Temperature range</b>					
Service temperature	Min. °C	Min. °F	Max. °C (intermittent)	Max. °F (intermittent)	ASTM D1056
	-75	-103	121	250	
<b>Flammability</b>					
Flame FMVSS 302 (burn rate)	3.94 in/minute (100 mm/minute) max Passes at 0.188 in (4.76 mm) and higher				FMVSS 302
<b>Resistance to water</b>					
Water absorption by vacuum	10% max				ASTM D1056
<b>Physical attributes</b>					
Density	4 - 6 lb/ft <sup>3</sup> 64 - 96 kg/m <sup>3</sup>				ASTM D1056
<b>Mechanical properties</b>					
Compression set	55% max				ASTM D1056
Tensile strength	25 psi min 172 kPa min				ASTM D412 (Die A)
Elongation	175% min				ASTM D412 (Die A)
Tear strength	10 lb/in min 1.75 kN/m min				ASTM D624 (Die C)
<b>Compression deflection</b>					
Compression deflection 25%	3 psi max 20.7 kPa max				ASTM D1056

Property	Value / Assessment	Standard / Test method
Compression deflection 50% - 60 sec hold	3.05 - 6.96 psi 21.01 - 48 kPa	ISO 3386-1
Change in compression deflection	±30 %	ASTM D1056
<b>UL Listed</b>		
UL gaskets and seals	UL File # JMLU2.MH25062 Suitable for UL50E continuous compression applications for enclosure types: 2, 3, 3X, 3R, 3RX, 3S, 3SX, 4, 4X, 5, 6, 6P Suitable as gasket material for use in UL 508 - Industrial Control Equipment UL gaskets & seals max service temperature: 60°C (140°F)	UL 50E, UL 508

All data and technical information are based on results achieved under the specific conditions defined according to the testing standards referenced. Despite taking every precaution to ensure that said data and technical information are up to date, Armacell does not make any representation or warranty, express or implied, as to the accuracy, content or completeness of said data and technical information. Armacell also does not assume any liability towards any person resulting from the use of said data or technical information. Armacell reserves the right to revoke, modify or amend this document at any moment. It is the customer's responsibility to verify if the product is suitable for the intended application. The responsibility for professional and correct installation and compliance with relevant building regulations lies with the customer. This document does not constitute nor is part of a legal offer to sell or to contract.

At Armacell, your trust means everything to us, so we want to let you know your rights and make it easier for you to understand what information we collect and why we collect it. If you would like to find out about our processing of your data, please visit our Data Protection Policy.

Trademarks followed by © or TM are trademarks of the Armacell Group. © Armacell, 2024. All rights reserved.

ArmaComp | EnsoLite EG0 | TDS | 092024 | en-US

## ABOUT ARMACELL

---

As the inventor of flexible foam for equipment insulation and a leading provider of engineered foams, Armacell develops innovative and safe thermal and mechanical solutions that create sustainable value for its customers. Armacell's products significantly contribute to global energy efficiency making a difference around the world every day. With more than 3,300 employees and 25 production plants in 19 countries, the company operates two main businesses, Advanced Insulation and Engineered Foams. Armacell focuses on insulation materials for technical equipment, high-performance foams for acoustic and lightweight applications, recycled PET products, next-generation aerogel technology and passive fire protection systems.

For more information, please visit:  
[www.armacell.com](http://www.armacell.com)

