

Test Report

NO.: GLC3707L441657A04

Date: 2017.01.20

Page 1 of 5

Applicant: Worldwide Foam, Ltd

The following sample(s) was/were submitted and identified on behalf of the client as:

Sample Name: PE FOAM SHEETS

Sample Received Date: 2017.01.12

Testing Period: 2017.01.12 To 2017.01.20

Test Requested: RoHS Directive 2011/65/EU & (EU)2015/863 Annex II

Test Methods:

- (1) IEC 62321-5 Edition 1.0:2013 method, Lead Analysis is performed by AAS
- (2) IEC 62321-5 Edition 1.0:2013 method, Cadmium Analysis is performed by AAS
- (3) IEC 62321-4 Edition 1.0:2013 method, Mercury Analysis is performed by ICP-OES
- (4) IEC 62321 Edition 1.0:2008 method, Hexavalent Chromium Analysis is performed by UV-Vis
- (5) IEC 62321-6 Edition 1.0:2015 method, PBBs and PBDEs Analysis is performed by GC-MS
- (6) EPA 8061A:1996 method, Phthalate Analysis is performed by GC-MS

Testing Results: Please refer to next page(s)

Approved by: *Wangyan*

Code: k0aklz

Test Report

NO.: GLC3707L441657A04

Date: 2017.01.20

Page 2 of 5

Test Results (Unit: mg/kg)

Test Item	MDL	Test Result	RoHS Limit
Lead (Pb)	1	N.D.	1000
Cadmium (Cd)	1	N.D.	100
Mercury (Hg)	1	N.D.	1000
Hexavalent Chromium (Cr ⁶⁺)	1	N.D.	1000
Sum of PBBs	—	N.D.	1000
Bromobiphenyl	5	N.D.	—
Dibromobiphenyl	5	N.D.	—
Tribromobiphenyl	5	N.D.	—
Tetrabromobiphenyl	5	N.D.	—
Pentabromobiphenyl	5	N.D.	—
Hexabromobiphenyl	5	N.D.	—
Heptabromobiphenyl	5	N.D.	—
Octabromobiphenyl	5	N.D.	—
Nonabromobiphenyl	5	N.D.	—
Decabromobiphenyl	5	N.D.	—
Sum of PBDEs	—	N.D.	1000
Bromodiphenyl ether	5	N.D.	—
Dibromodiphenyl ether	5	N.D.	—
Tribromodiphenyl ether	5	N.D.	—
Tetrabromodiphenyl ether	5	N.D.	—
Pentabromodiphenyl ether	5	N.D.	—
Hexabromodiphenyl ether	5	N.D.	—
Heptabromodiphenyl ether	5	N.D.	—
Octabromodiphenyl ether	5	N.D.	—
Nonabromodiphenyl ether	5	N.D.	—
Decabromodiphenyl ether	5	N.D.	—

Test Results (Unit: mg/kg)

Test Item	MDL	Test Result	RoHS Limit
DEHP	50	N.D.	1000
DBP	50	N.D.	1000
BBP	50	N.D.	1000
DIBP	50	N.D.	1000

- Note:
- (1) “—” = Does not stipulate
 - (2) N.D. = Not Detected (<MDL)
 - (3) MDL = Method Detection Limit
 - (4) The most allowable limit value reference to RoHS Directive 2011/65/EU & (EU)2015/863 Annex II

Sample No. &Photo:



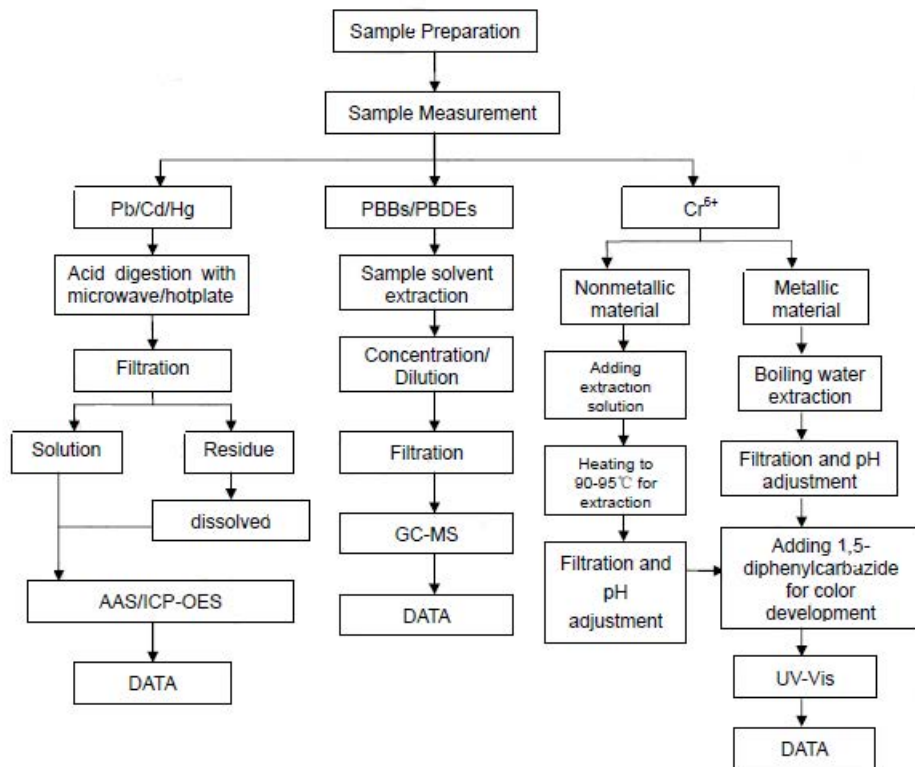
Measurement Flow-chart

Tested by: Han Weijia

Checked by: Li Libing

Person in charge of the lab: Yu Jianwei

These Samples Were Dissolved Totally By Pre-conditioning Method According To Below Flow Chart. (Cr^{6+} And PBBs/PBDEs Test Method Excluded)

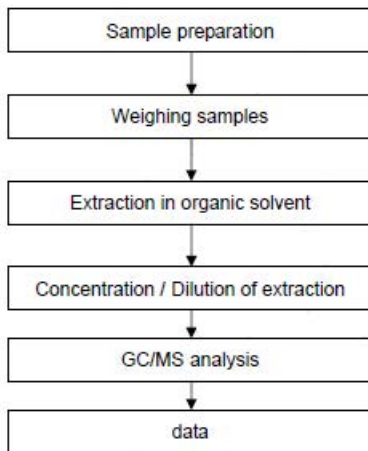


Phthalate Flow Chart

Tested by: Duo Zijia

Checked by: Li Libing

Person in charge of the lab: Yu Jianwei



End of Report